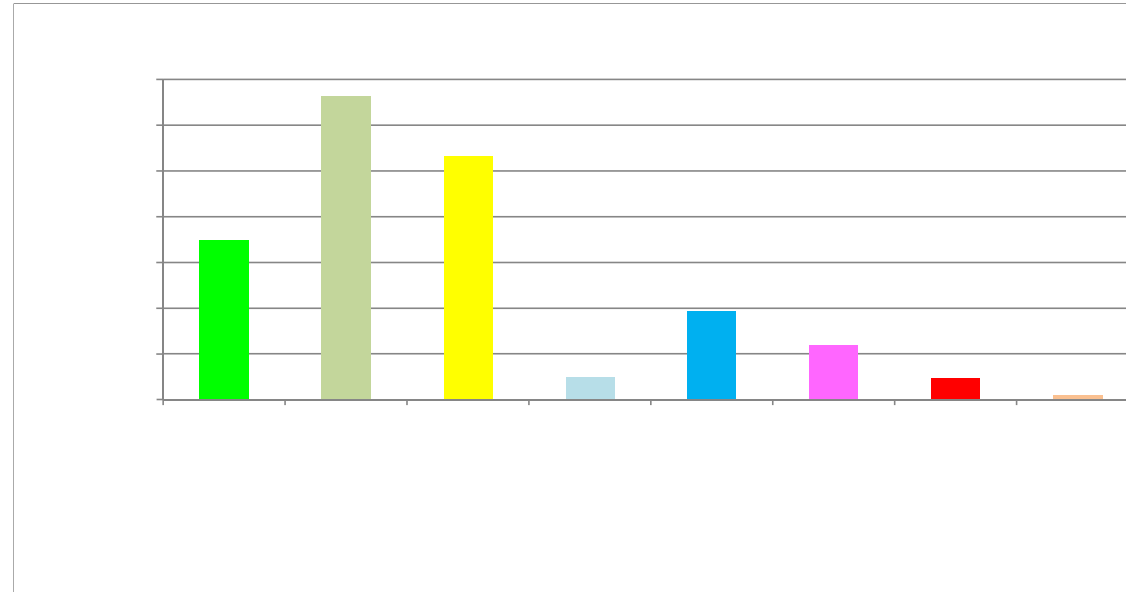


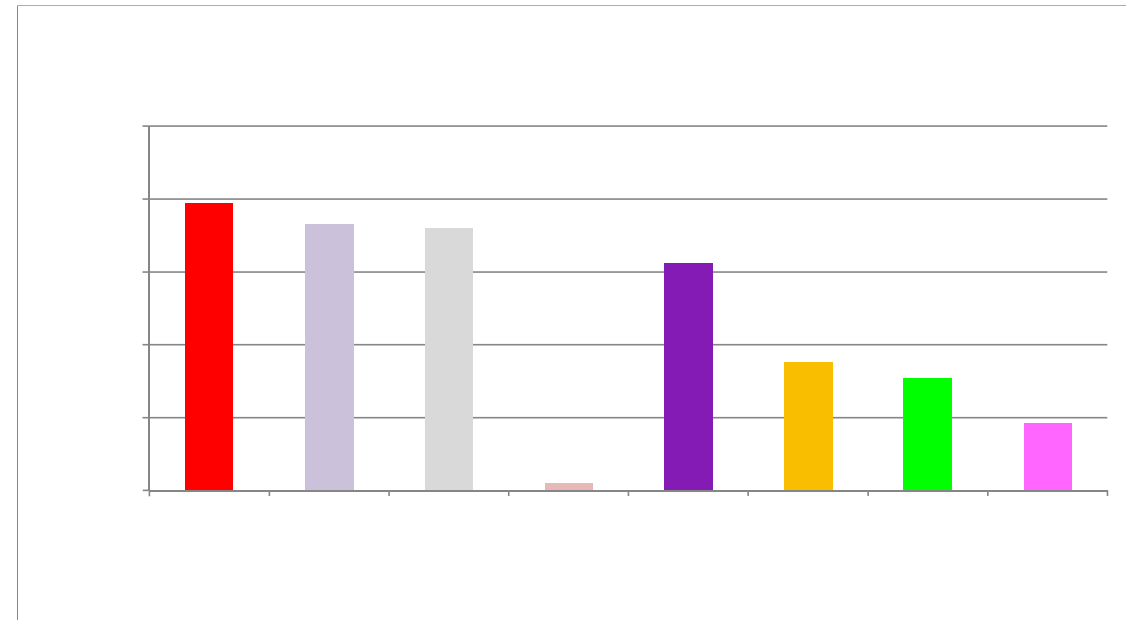
Holmes Chapel Traffic Issues Consultation Results

Issue	Responses
General volume/congestion	174
HGVs/narrow roads	331
Speeding/traffic calming	266
Road condition	24
Parking/Access	97
Pedestrians/Crossing	59
Signals	23
Cycling	5



Please note: Cheshire East Council received a total of 364 responses to the consultation. Each form gave the respondent the opportunity to identify three issues and three locations, therefore each time an issue has been indicated on a form it has been counted on the results graphs. For example, 'HGVs/narrow roads' may have been counted three times from a single form.

Location	Responses
Village centre/Church	197
Macclesfield Road	183
Middlewich Road	180
M6 and junctions	5
A50/London Road	156
Whole village	88
Chester Road	77
Station/Sandiford Road	46



Improvements	Short term	Medium to Long term	Total
Bypass	4	13	147
Speed limit enforcement	150	72	32
Reduce HGVs	72	71	40
General traffic volume	5	5	4
Motorway junction improvements	2	6	5
Pedestrianisation/Crossing	21	24	25
Access/Parking	30	60	41
Signals	12	8	2

